

BUMPERSIGN *FLEX*

THE RESILIENT SPRING-LOADED SIGN
YOU'LL NEVER HAVE TO REPLACE

THE MCCUE DIFFERENCE

HI, WE'RE MCCUE AND WE HAVE THE SIGN FOR YOU!

Our design philosophy is simple — we innovate with our customers every day to solve their most pressing problems. **BumperSign FLEX** was engineered with that methodology and is revolutionizing retail sign innovation with these three principals:



BUILT TO LAST

Designed to thrive in retail parking lots, our products resist wear and tear.



EASE OF INSTALL

Simple installation with just four anchors into most parking surfaces.



AESTHETICS

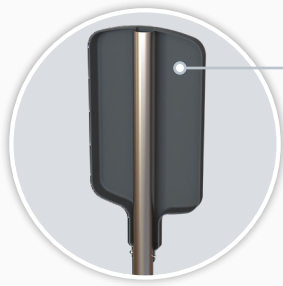
Finally a sign that meets your brand standards.

Hit it.
We dare you.

**UPGRADE THE CUSTOMER EXPERIENCE IN YOUR PARKING AREAS —
CALL US TODAY (800) 800-8503!**

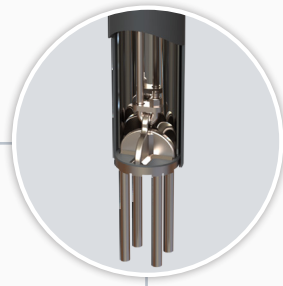


McCue



FINISHING TOUCHES

The molded sign topper completes the modern design.



CONCEALED ANCHORS

Hidden hardware means clean appearances and no tripping hazards!



ENGINEERED MATERIALS

Polymers, spring steel, elastomers — all combined to put in the work when you need it and look damn good when you don't.

INNERSPRING TECHNOLOGY

The spring-loaded interior absorbs impact energy and bounces back to original position every time.

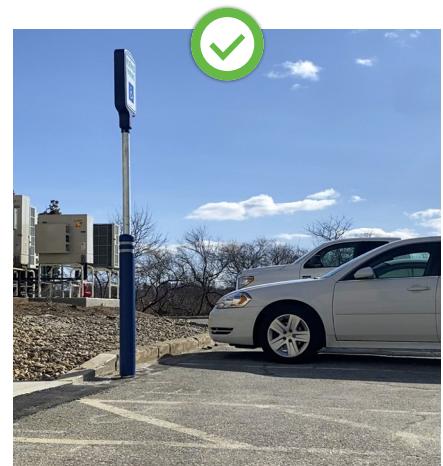


BUMPERSIGN *FLEX*

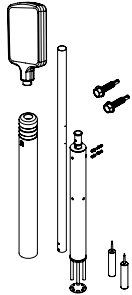
Meet **BumperSign FLEX**, the sign you'll never have to replace! Its innerspring technology allows it to deflect and dissipate impact energy. And it always returns upright —saving you from crooked signs and costly repairs. The customer experience begins and ends in the parking lot, so make sure you get it right, with **BumperSign FLEX**!

..... HOW IT WORKS: **BUMPERSIGN FLEX**

Bump. Bend. Bounce Back.



BUMPERSIGN *FLEX*

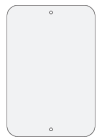


BUMPERSIGN FLEX

PART NUMBER: BSF-XXX

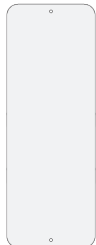
What's Included: Bollard cover, internal core, pole, sign topper, hardware kit & epoxy

PLACARDS & TOPPERS



STANDARD PLACARD

Custom standard placards available, call for details.



LARGE PLACARD

Custom size placards available, call for details.



2-SIDED SIGN TOPPER

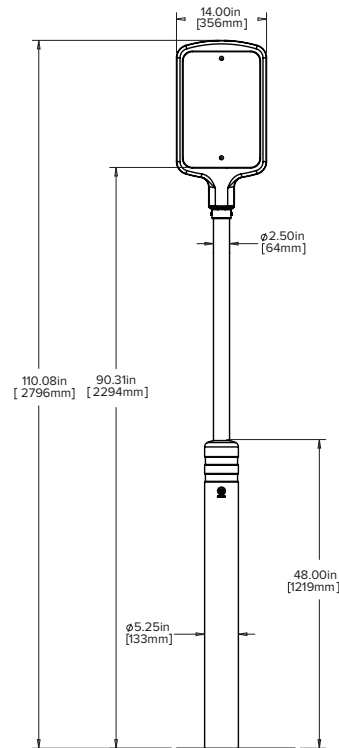
Product Number: 15AB060-###



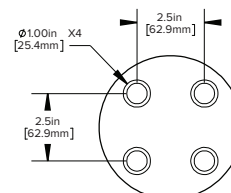
4-SIDED SIGN TOPPER

Product Number: FCS-6-SIGN-401

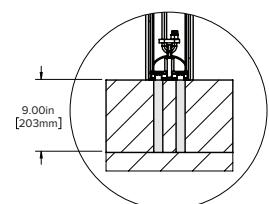
TECHNICAL *SPECS*



SIDE VIEW



HOLE PATTERN



ANCHOR DEPTH